

MHE Incident & Accident Reduction Through Employee Engagement

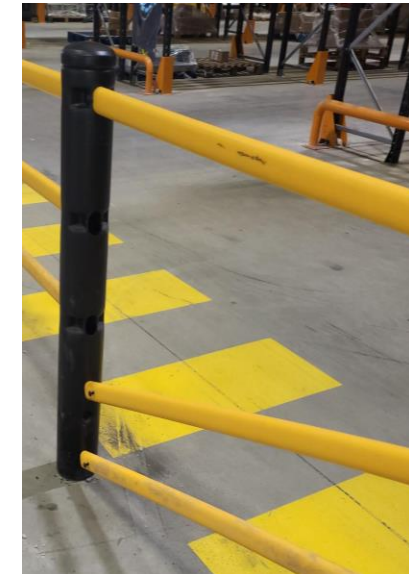
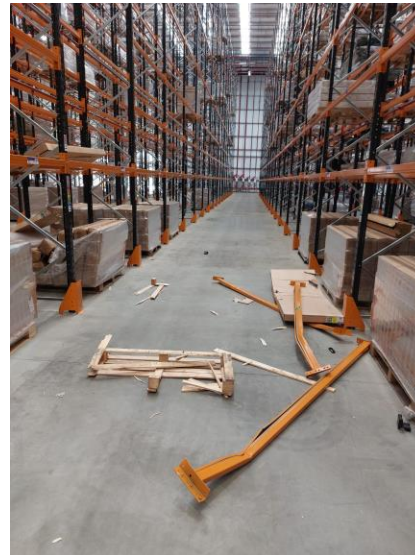
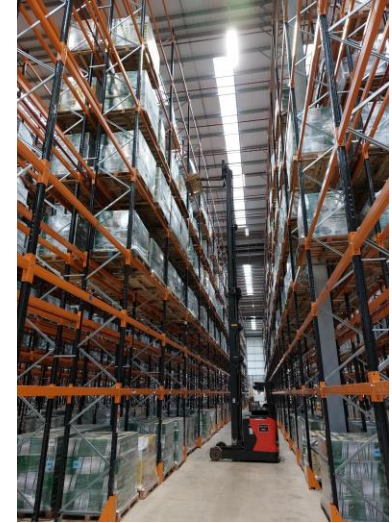
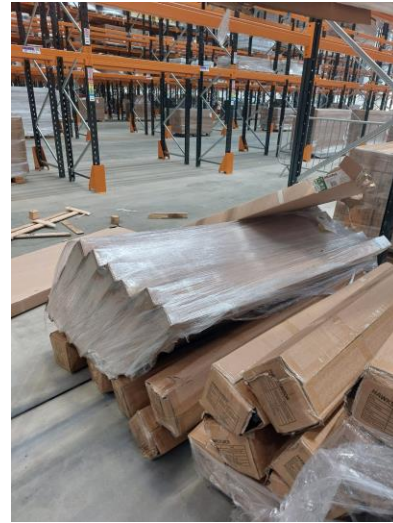
19 September 2024



The Problem

High levels of MHE incidents per 100,000 hrs driven resulting in damage to equipment stock and minor injuries to operators.

- Damaged beams
- Damaged stock
- Fallen pallets
- Pushed pallets
- Damaged equipment



Understanding Causation

Engagement with operators showed their concerns and contributing factors for incidents and accidents. This engagement also showed positives including training and safety awareness/engagement across site



The Solution

Site engagement with operators and pedestrians

- Engagement activities
- Additional training
- Surveys and quizzes
- Process reviews
- Observations
- Informal and formal safety discussions
- Speed restrictions



© GXO Logistics, Inc. | Confidential and Proprietary

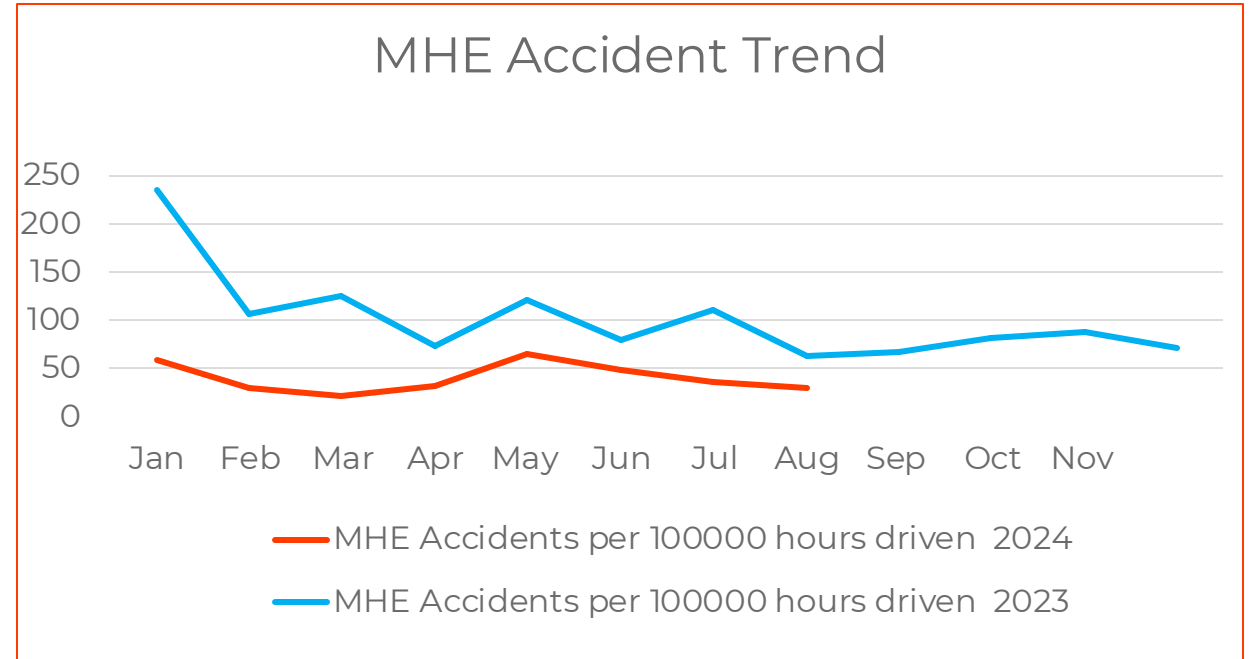


RTITB Safety Summit 2024

The Need To Reduce Incidents

The Results

- Reduction in incidents while maintaining honest reporting
- MHE incidents well below 2023 levels and continue to drop overall
- Greater engagement and reporting across all areas of QHSE and general concerns
- Improved staff morale
- Reduced operating costs



MHE Operator Site Survey

How would you rate our MHE safety onsite?



© GXO Logistics, Inc. | Confidential and Proprietary



RTITB Safety Summit 2024

Any questions?



GXO

Logistics at full potential

